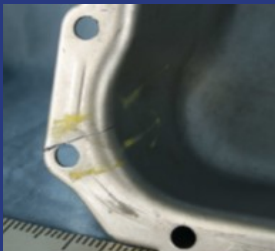




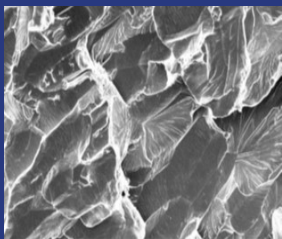
Learn how our Material Support & Solutions team solved this customer material issue:

FORMABILITY ISSUE



THE PROBLEM:

Deep drawn parts were sporadically cracking in the corners resulting in excessive scrap but all material specifications were being met.



THE ANALYSIS:

Worthington metallurgists evaluated the cracking mechanism, chemistry, microstructure and mechanical properties.



THE SOLUTION:

Cracking was eliminated by increasing lubricity with a dry film lubricant and addressing Secondary Cold Work Embrittlement (SCWE) with chemistry modifications.

THE ACTION:

If you want help finding a cost-effective solution for cracking in a deep drawn part, contact the Material Support & Solutions team at Worthington.

CALL US AT 1-800-944-2255

WORTHINGTON INDUSTRIES. 200 WEST OLD WILSON BRIDGE ROAD COLUMBUS, OH 43085